



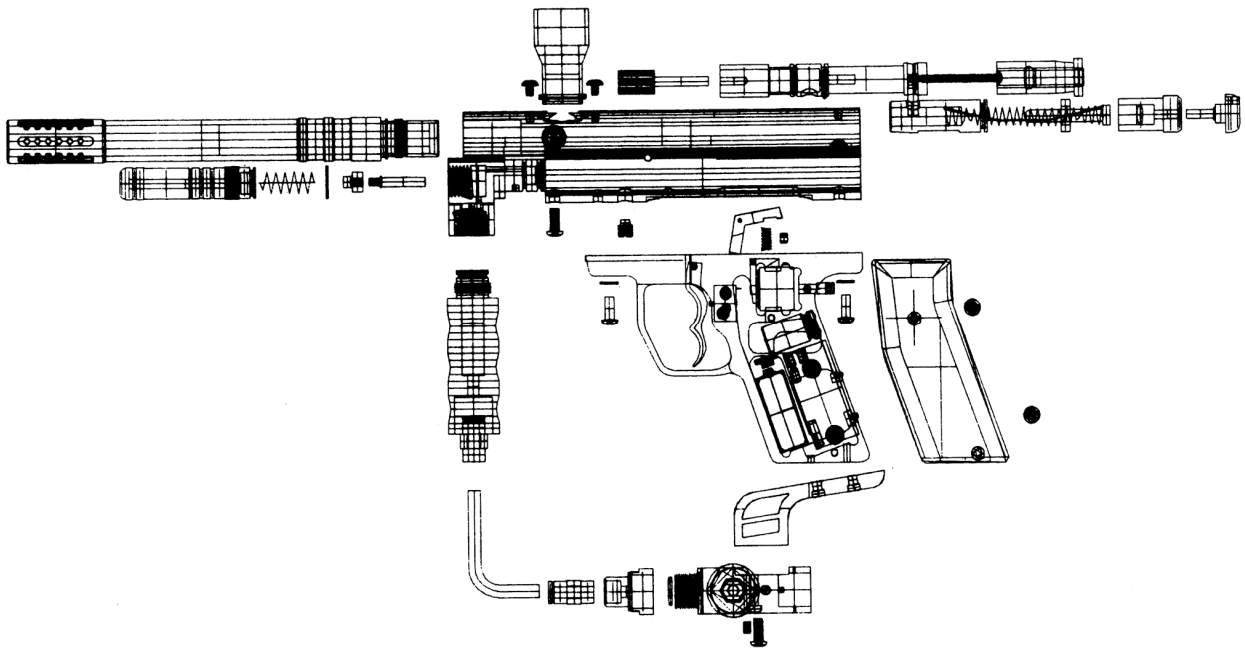
Paintball Products Inc.

1172 S. Beltline Hwy.

Mobile AL, 36609

1-866-637-2468

www.m3paintball.com



M3 LED Electronic Trigger Frame (ETF)

The **M3 ETF** features a L.E.D. indicator light, electronic safety, low battery warning, and 10 balls per second actuation capability. What sets this trigger frame apart from its competition is its revolutionary, external adjustable solenoid and sear. The **M3 LED ETF** is designed to fit any Kingman-style marker.

Operation

Battery installation

The **M3 LED ETF** is powered by a 9-volt battery. (Not included, alkaline recommended) To install the battery, remove left trigger frame grip panel (14) (see Fig. 1-1) plug in battery and insert as shown (Fig. 1-1). **Note**-Be sure wires are tucked into frame and cannot become trapped between trigger frame and grip panel. Secure panel with screws.

Activation

Press and hold actuation button (11) (see Fig. 1-1) for **5** seconds. Marker will turn **ON** and automatically set itself to the **Safety** position. LED indicator will glow **RED** (12) (Fig. 1-1).

To activate **Fire** mode press actuation button (11) once. (LED indicator will glow **GREEN**).

NOTE- Once marker is activated, each press of the actuation button (11) will cycle the maker between **Safety** and **Fire** modes.

To turn **OFF** the marker press and hold the actuation button (11) (Fig. 1-1) for **5** seconds. Marker is off when no Red or Green color is illuminated by the LED indicator. (12) (Fig. 1-1).

Adjustments

The **ETF** may require adjustment as the distance between the striker and sear may vary from one marker to another.

To adjust the M3 ETF complete the following steps: (See Fig. 1-1)

- 1.** Loosen adjustment locking screw (3)
- 2.** Unscrew sear adjustment screw (13) until flush with trigger frame body.
- 3.** Turn ETF on. (No Air Attached), set to **Fire** mode.
- 4.** Cock marker by pulling on Bolt.
- 5.** Pull trigger, if bolt releases re-cock and repeat step 5 at least 4 times. If marker fires correctly, attach air and repeat step 5. If marker again fires correctly tighten adjustment locking screw (3). Adjustment is complete. If marker does not fire, see step 6.
- 6.** If marker did not fire in step 5 then turn sear adjustment screw (13) clockwise 1/8th turn. Repeat step 5. If maker still does not fire, continue to adjust sear adjustment screw (13) 1/8th turn in and repeat step 5 till marker fires correctly.

Note - Remember to tighten adjustment locking screw (3) when completing the adjustment process.

Installation

1. Remove existing trigger frame from marker. (If applicable)
2. Install the M3 LED ETF to marker body using 2 trigger frame screws (7) and washers (6). See Fig. 1-1

Technical Support

For additional information go to www.m3paintball.com, send us an email at techsupport@m3paintball.com, or call toll free to 1-866-637-2255.

